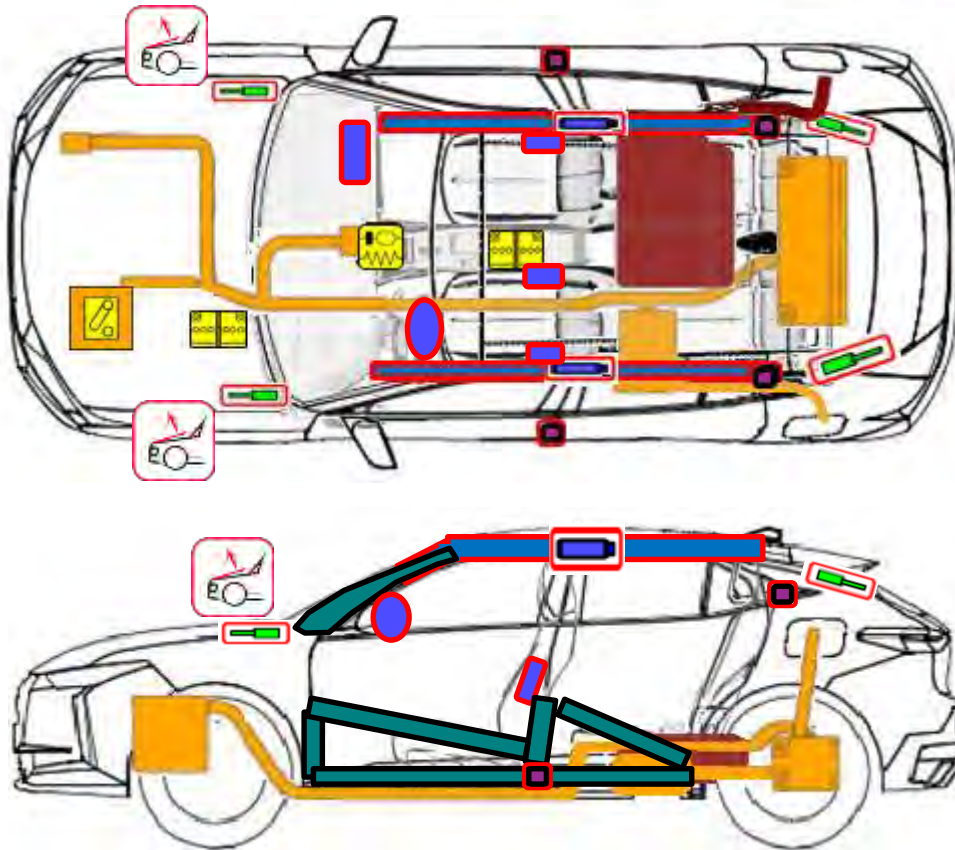



DS DS4 E TENSE

5 doors, 5 seats, hatchback
(2020/12 →)



	airbag		Stored gas inflator		Seat belt pretensioner		SRS control unit		Pedestrian protection active system
			gas strut and triggered pre-loaded spring / pre-loaded spring		High strength zone		Zone requiring special attention		
	Battery low voltage								
	Battery pack, high-voltage		High voltage power cable						
			Low voltage device that disconnects high voltage		Fuel tank content gasoline/ethanol				

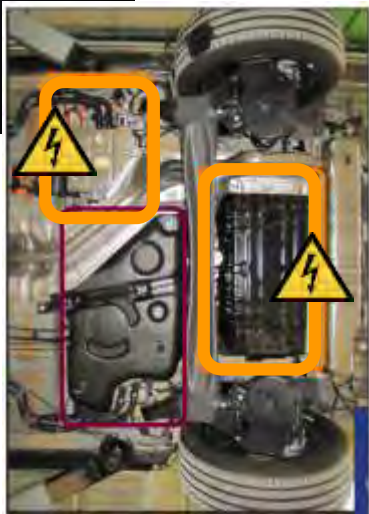
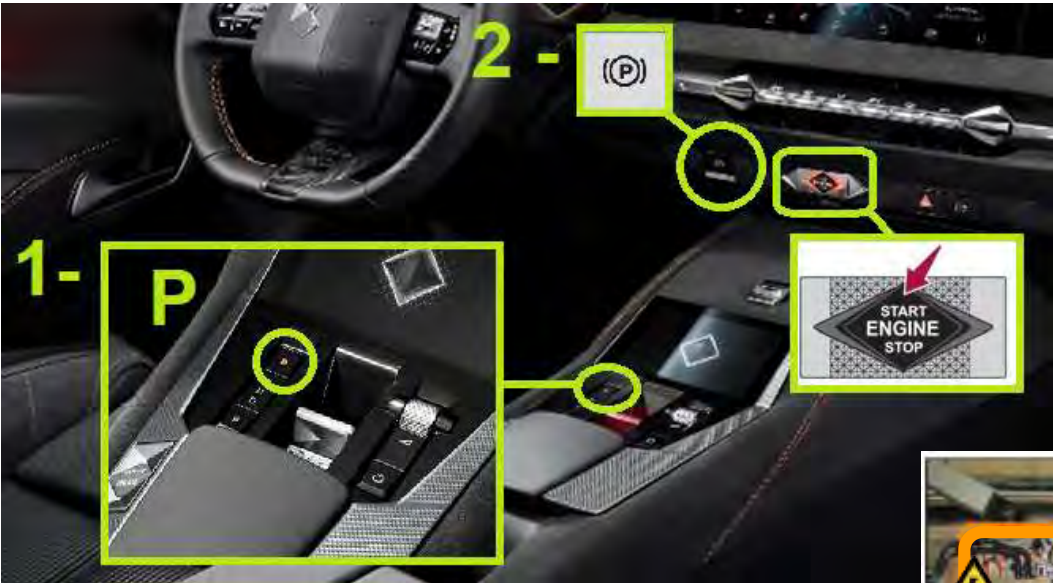
1. Identification / recognition



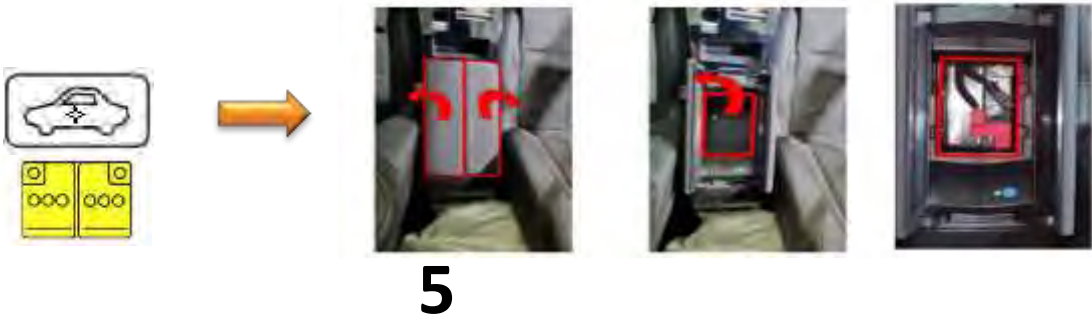
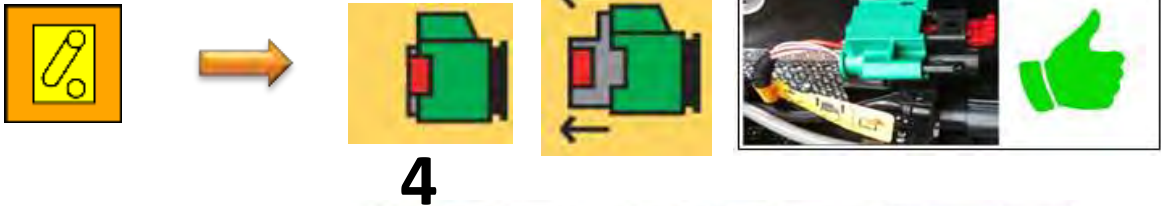
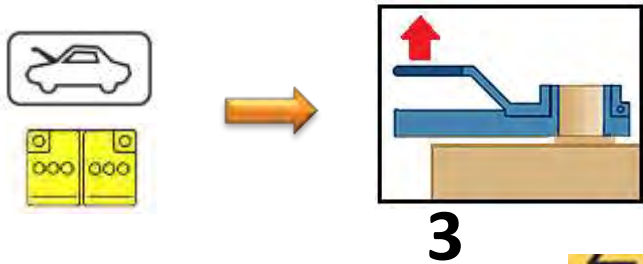
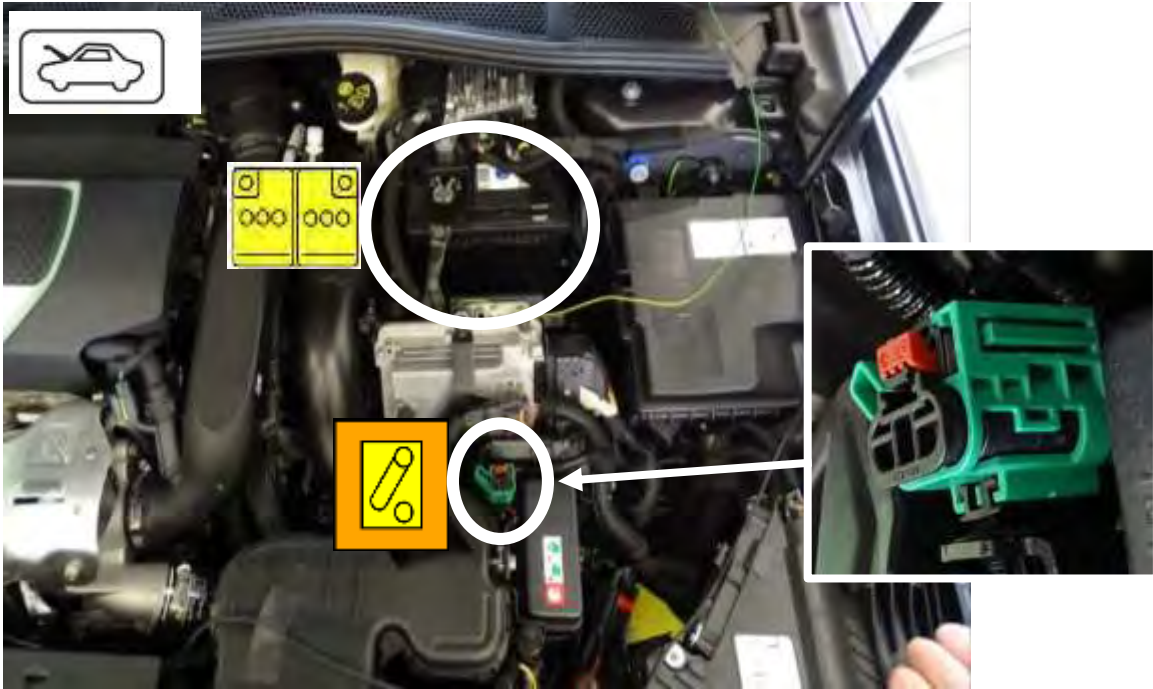
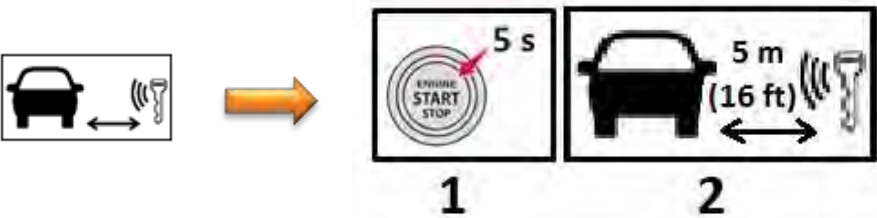
The lack of engine noise does not mean that the vehicle is switched off. The vehicle can move without making a noise and can restart instantly provided it has not been fully switched off.



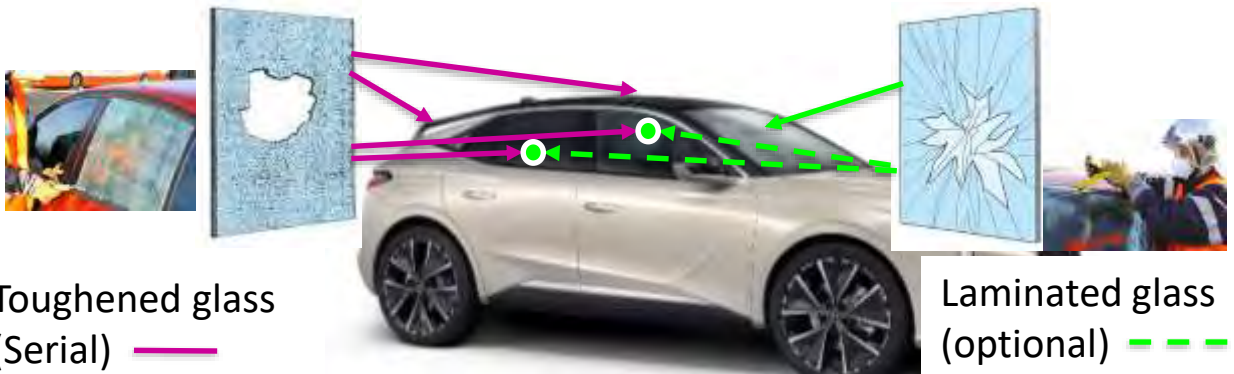
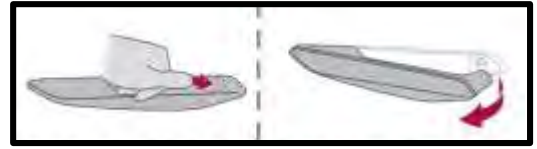
2. Immobilisation / stabilisation / lifting



3. Disable direct hazards / safety regulations



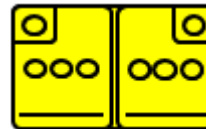
4. Access to the occupants



5. Stored energy / liquids / gases / solids



Li-ion 400V - 12,4 kWh



12V



If coolant escapes from the battery cooling system, there is a risk of a thermal reaction in the high-voltage battery. Monitor the temperature of the high-voltage battery!



6. In case of fire



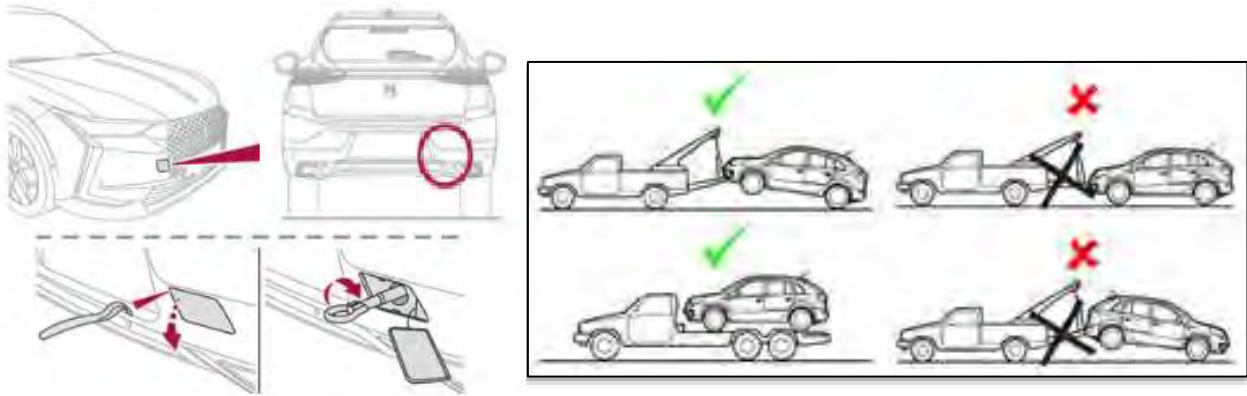
Lithium-ion batteries may self-ignite or reignite once the fire has been extinguished. Monitor the temperature of the high-voltage battery !



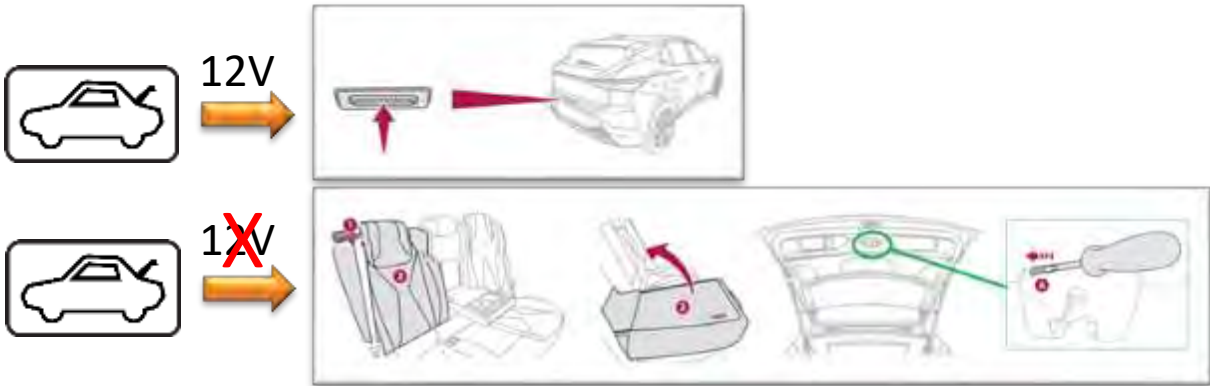
7. In case of submersion

Remove the vehicle from the water then refer to **chapter 3. “Disable direct hazards / safety regulations”**

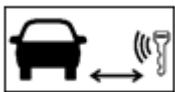
8. Towing / transportation / storage



9. Important additional information



10. Explanation of pictograms used



Deactivate the hands-free key



Bonnet



Use water to extinguish the fire



Warning, Electricity



Explosive



Corrosive



Hazardous to the human health