

NOTE: Pictures in this document apply to Left-Hand cars. Unless special notes, Right-Hand cars are mirror symmetry.

	Airbag		Stored gas inflator		Seat belt pretensioner
	Gas strut / Preloaded spring		High strength zone		SRS control unit
	Battery low voltage		High voltage power cable		High voltage component
	Battery pack, high-voltage		Low voltage device that disconnects high voltage		

1. Identification / recognition



LACK OF ENGINE NOISE DOES NOT MEAN VEHICLE IS OFF: SILENT MOVEMENT OR INSTANT RE-START CAPABILITY EXISTS UNTIL VEHICLE IS FULLY SHUT DOWN. WEAR APPROPRIATE PPE.



2. Immobilisation / stabilisation / lifting

A: Immobilise the vehicle



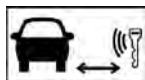
1. Apply the parking brake.
Select "P" gear.
Remove the electronic key, and ensure it is 4 meters distance from the vehicle.

2. Block the wheels.

B: Lifting Points



- Appropriate stabilisation-lifting points
- Appropriate stabilisation points vehicle on side
- High voltage battery



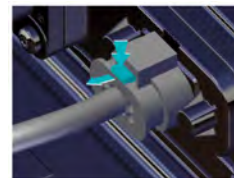
After parking, leave the vehicle and take all the keys with you. Close all the doors and lock the vehicle. To prevent accidental restarts, ensure that the smart key is kept at least 4 meters away.

3. Disable direct hazards / safety regulations



Wear appropriate personal protective equipment (rubber insulating gloves/insulating rubber shoes/ tools with protective insulating covers/goggles). Do not attempt to open the power battery!

MAIN DISABLING METHOD



ACCESS to low voltage battery



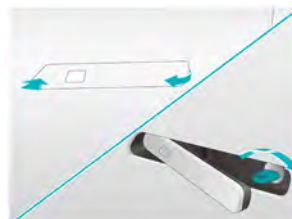
4. Access to the occupants



Front seat adjustment



Door outer handle



Unlock the door with a mechanical key



Open the liftgate



Emergency unlocking device for the liftgate



Steering wheel adjustment



Handle inside the door

Glass type

- ① Laminated glass
- ② Laminated glass (European models) or tempered glass (non-European models)
- ③ Tempered glass



High-strength area of the body

High-strength areas are shown as illustrated.



5. Stored energy / liquids / gases / solids

							12V
							351.68V 301.44V
							850-950g



When the coolant leaks from the battery pack, it may become unstable, posing a risk of thermal runaway. Use an infrared thermal imager to check the battery pack temperature.



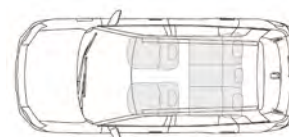
6. In case of fire



Use water to extinguish the fire



BATTERY RE-IGNITION!



Gas struts/pre-tensioning springs pose an explosion risk!

7. In case of submersion

Wear appropriate personal protective equipment. Remove the vehicle from the water and safely disconnect the high-voltage power supply as described in Chapter 3. Vehicles submerged in saltwater present a greater potential risk of power battery fire.

Tilt the vehicle to one side to let water drain from the vehicle and the power battery.

8. Towing / transportation / storage

Maintain a safe distance from other vehicles!



BATTERY RE-IGNITION!



Vehicle transport



Tow hook installation location

9. Important additional information

Manufacturer: GAC Aion New Energy Automobile Co., Ltd.

For more information, refer to the Emergency Response Guide

10. Explanation of pictograms used

	Warning, Electricity		Flammable
	General warning sign		Hazardous to the human health
	Air-conditioning component		Acute toxicity
	Electric Vehicle		Corrosives
	Bonnet		Explosive
	Use water to extinguish the fire		Remove smart key
	Use thermal Infrared camera		